

ALUVISION Hi-LED 55+

PRODUCT OVERVIEW

SPECIFICATION

2.5mm LED Videowall Solution ▼

Aluvision's Hi-LED 55+ boasts the ability to be used in truly modular arrangements with the use of Aluvision's own rigging system, which utilises materials that focus on sustainability and reducing waste.

RESOLUTION	192px x 192px
WEIGHT	9.8 KG
MAX POWER DRAW	101 W
BRIGHTNESS	1,000 nits
INGRESS PROTECTION	IP 44
OPTIMAL VIEW DISTANCE	2.5m
PIXEL PITCH	2.5mm
DIMENSIONS	496mm x 496mm x 55mm



USE CASES

CUBE ▼

All corners of the Hi-LED 55+ cabinets can be removed, allowing 5 panels to be combined to create a seamless cube arrangement.



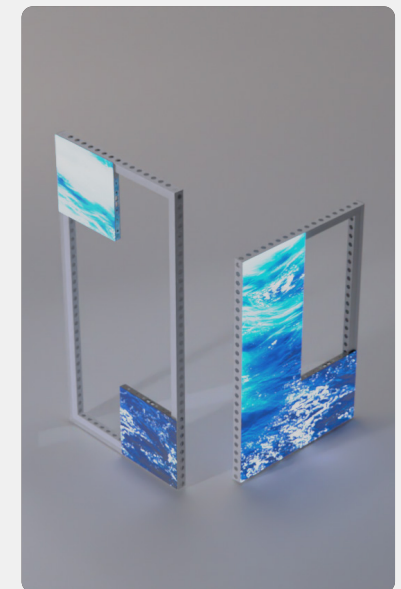
WALKABLE TUNNEL ▼

By utilising Aluvision's modular rigging, panels can be arranged within a cylindrical housing to create an immersive walkable tunnel.



MODULAR FRAME ▼

The modular frame allows panels to be placed at varying intervals to create truly unique arrangements, all whilst reducing waste.



CABINET DIMENSIONS

For more information, please get in touch with us:
sales@dbpixelhouse.com | +44 (0)345 226 3083

