

# DIGILED HRi 3.9

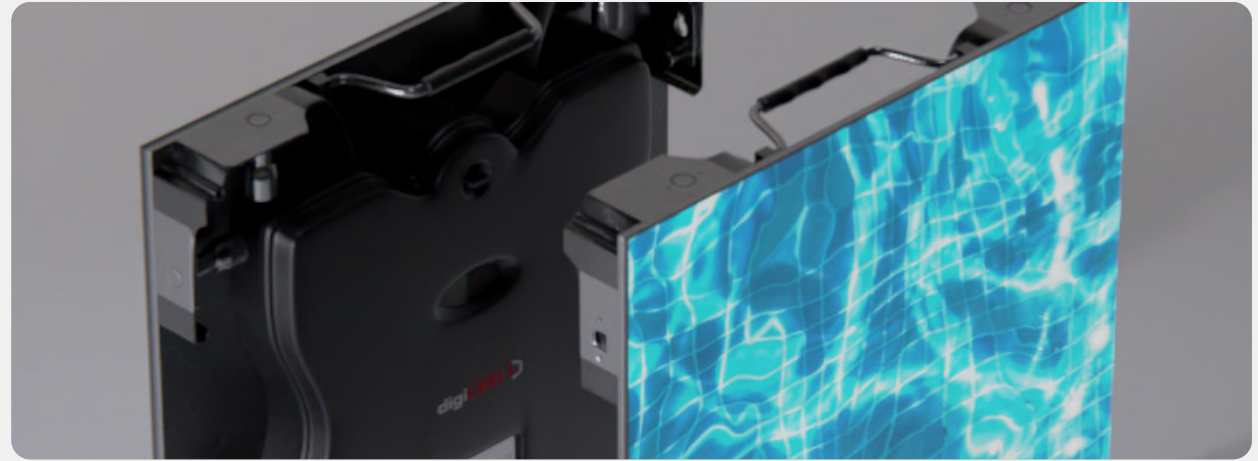
## PRODUCT OVERVIEW

## SPECIFICATION

### 3.9mm LED Videowall Solution ▼

The DigiLED HRi 3.9 panels are the ideal, cost-effective solution for large-scale LED videowalls that are either flying from truss, or are to be viewed from a distance that is further than 2.6mm panels.

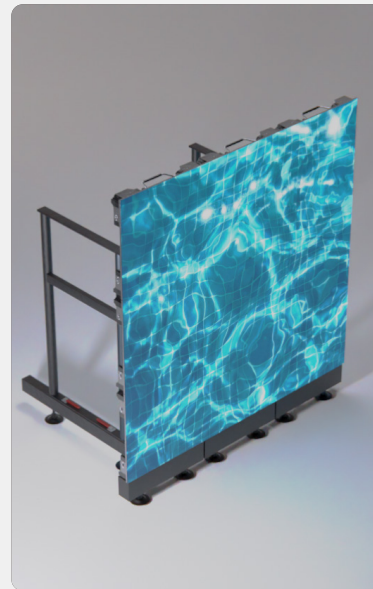
RESOLUTION	192px x 192px
WEIGHT	9 KG
MAX POWER DRAW	180 W
BRIGHTNESS	1,200 nits
INGRESS PROTECTION	IP 44
OPTIMAL VIEW DISTANCE	3m
PIXEL PITCH	3.9mm
DIMENSIONS	500mm x 500mm x 90mm



## USE CASES

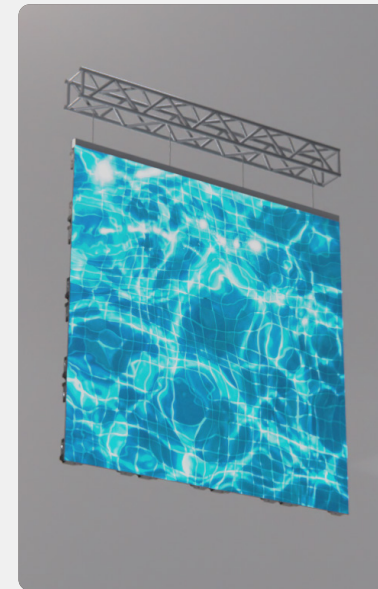
### GROUNDSTACK ▼

These panels can be utilised in a groundstack arrangement, allowing for large areas of LED at ground-height at your exhibit.



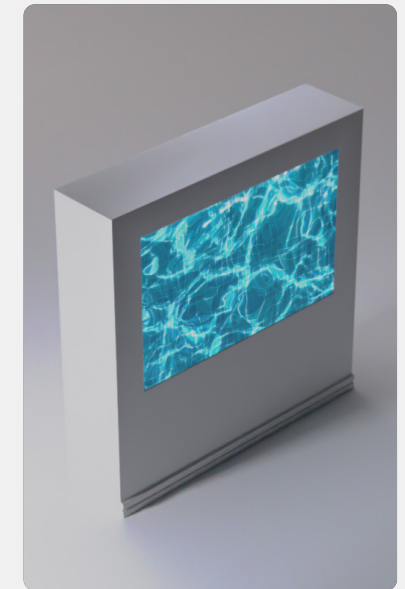
### FLYING LED ▼

The HRi 3.9's pixel-pitch means that it is a very competitive budget panel that finds its optimal viewing distance in flying arrangements.



### APERTURE ▼

These panels also find use in large-scale aperture arrangements where other videowall solutions would not be sufficient.



# CABINET DIMENSIONS

For more information, please get in touch with us:  
[sales@dbpixelhouse.com](mailto:sales@dbpixelhouse.com) | +44 (0)345 226 3083

